

REACH-IT

*Status update and readiness for the
2010/2011 deadlines*

***REACH-IT / IUCLID Stakeholder Webinar**
21 June 2010*

*Tommy Hägg
ECHA – Scientific IT tools Unit (C1)*

Content of presentation

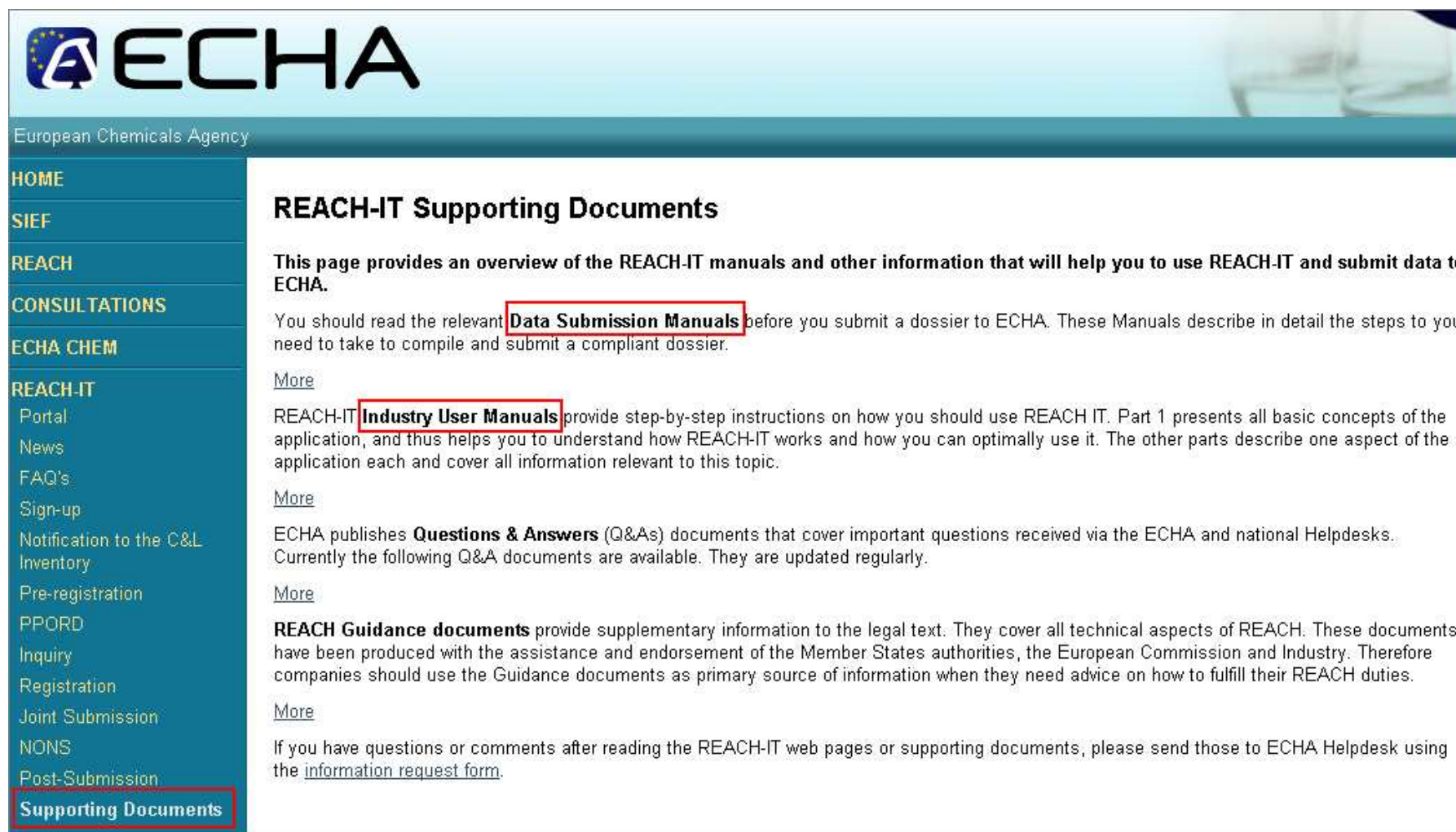
- REACH-IT Functionality
 - REACH-IT Usage / Expectations
 - Registration statistics
 - Current state of MSCA Connectivity
-

New functionality in 2010



- Access for MSCA via VPN secured connection
 - Online dossier creation for inquiry
 - Online dossier creation for CLP Notification (individually or by group of M/I)
 - Bulk CLP Notification submission individually or by group of M/I (Including Excel tool to create bulk file)
 - CnL Inventory (no public version yet)
 - Legal entity change functionality - Cease Manufacture
 - Industry User Manuals and Data Submission Manuals (many translated) made available from the Agency web site in the REACH-IT section
-

Further information: Manuals



ECHA
European Chemicals Agency

HOME
SIEF
REACH
CONSULTATIONS
ECHA CHEM
REACH-IT
Portal
News
FAQ's
Sign-up
Notification to the C&L Inventory
Pre-registration
PPORD
Inquiry
Registration
Joint Submission
NONS
Post-Submission
Supporting Documents

REACH-IT Supporting Documents

This page provides an overview of the REACH-IT manuals and other information that will help you to use REACH-IT and submit data to ECHA.

You should read the relevant **Data Submission Manuals** before you submit a dossier to ECHA. These Manuals describe in detail the steps to you need to take to compile and submit a compliant dossier.

[More](#)

REACH-IT **Industry User Manuals** provide step-by-step instructions on how you should use REACH IT. Part 1 presents all basic concepts of the application, and thus helps you to understand how REACH-IT works and how you can optimally use it. The other parts describe one aspect of the application each and cover all information relevant to this topic.

[More](#)

ECHA publishes **Questions & Answers** (Q&As) documents that cover important questions received via the ECHA and national Helpdesks. Currently the following Q&A documents are available. They are updated regularly.

[More](#)

REACH Guidance documents provide supplementary information to the legal text. They cover all technical aspects of REACH. These documents have been produced with the assistance and endorsement of the Member States authorities, the European Commission and Industry. Therefore companies should use the Guidance documents as primary source of information when they need advice on how to fulfill their REACH duties.

[More](#)

If you have questions or comments after reading the REACH-IT web pages or supporting documents, please send those to ECHA Helpdesk using the [information request form](#).

Upgrades

- Architecture redesigned:
 - Change of the submission pipeline for streamlining dossier and invoice processing
 - Performance enhancers to solve issues encountered during the pre-registration period
 - Synchronisation with the new IUCLID 5.2 format
 - Business Rules and Substance identity reviewed for enhancing data integrity
 - Joint Submission redesigned:
 - Parallel submission of Lead and Member dossier
-

In progress

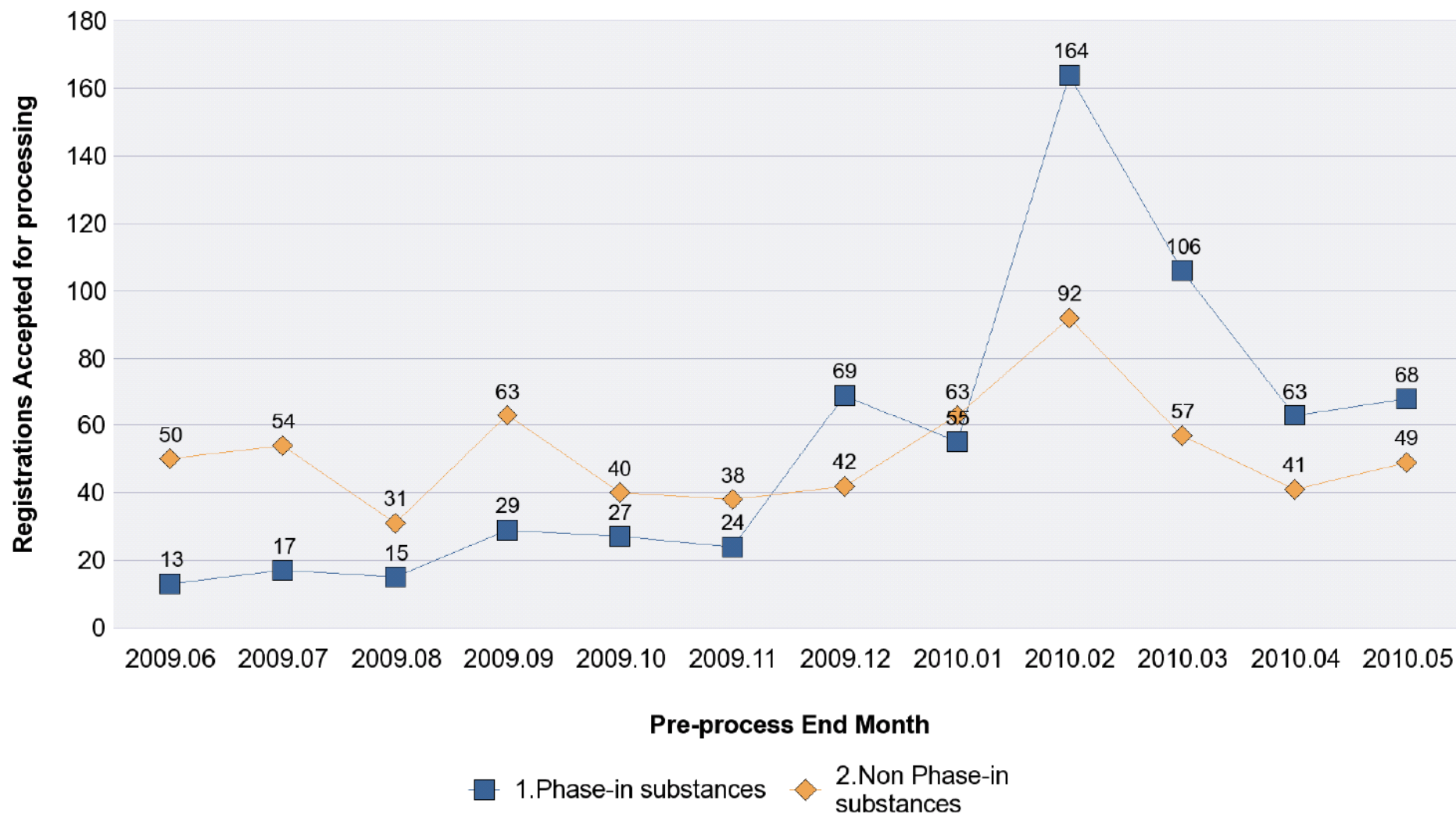
- Performance and load testing
 - Automation of the Business Rules, Technical Completeness Check and Invoice creation
 - Further streamlining of processes
 - Fixing issues found in production
 - Preparation of externally hosted REACH-IT secondary system (SBCS) – switch between both systems in case of disruption close to the deadline
 - Preparation of maintenance procedures
-

REACH-IT Usage / Expectations



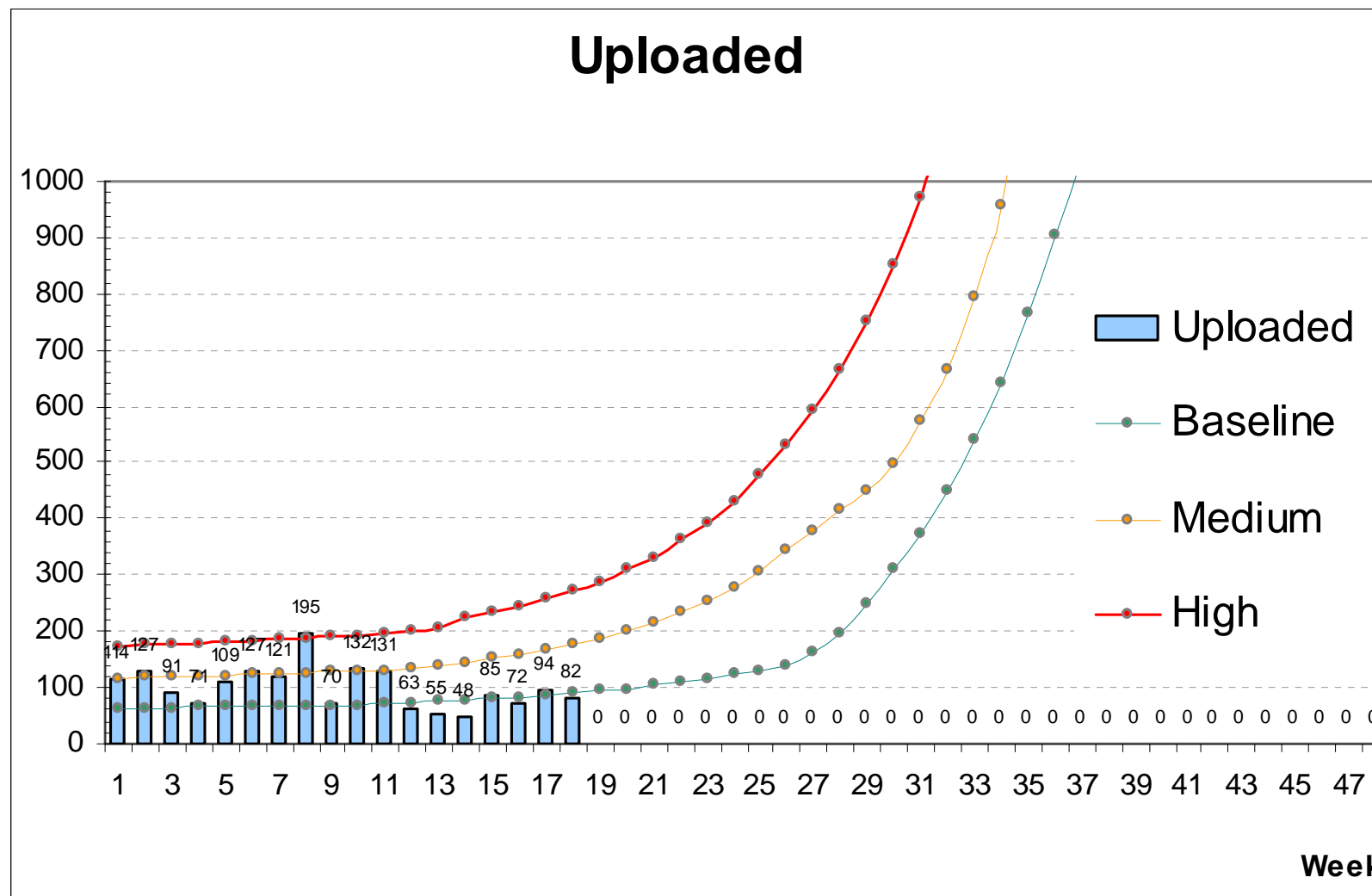
- Currently ca 5000 logins per week (Total logins so far ca 950 000)
- ca. 100 – 150 registration dossiers accepted for processing per month
- Expected registrations for ca. 5000 substances
 - List of 4515 identified to be registered published on our web site
- Based on extrapolations from industry feedback, ECHA expects to receive ca. 38 000 registration dossiers
- Although CLP notifications can be submitted in bulk and by groups, total number of notifications remains uncertain (several millions)
- Submissions will “peak” just before the deadlines and at unforeseen moments before that
- The functionalities of REACH-IT need to be reliable at all times and accessible also beyond regular working hours during peaks

Registration statistics



Registrations+ intermediates

Registration statistics II



MSCA Connectivity



- Organised via the Security Officers Network
- Member States need to
 - Agree to / Comply with the agreed Security policy
 - Organise responsibilities
 - Security officer
 - User Administrator
 - Focal point towards ECHA Helpdesk (36 issues raised) via dedicated web form
 - Organise Technical part
 - VPN Cryptobox
 - RSA Token for User Administrator
 - Client certificates for users
- The use of REACH-IT by Memberstates has just started

Connected Memberstates

- Malta
- Poland
- Latvia
- Italy
- Netherlands
- Czech Republic
- Slovenia
- Hungary
- United Kingdom (HSE)
- Spain (MSPS)
- Austria
- Cyprus
- Germany (UBA/ BAuA)
- Slovakia



REACH-IT

