



European
Commission



Enforcement in the CSS and measuring enforcement



Miquel A. Aguado-Monsonet
REACH Unit within DG GROW
European Commission

Content

1. Enforcement in the Chemical Strategy for Sustainability (CSS)
2. Enforcement indicators: a way to measure enforcement

EU chemical Strategy for Sustainability (CSS)

- Available since October 2020
- Time to step up chemical legislation after more than 10 years
- Many issues included (e.g. reform of the authorisation/restriction, essential use concept, ...) and contains more than 50 actions
 - ➔ *REACH, CLP revision, other chemical legislation*

EU chemical Strategy for Sustainability

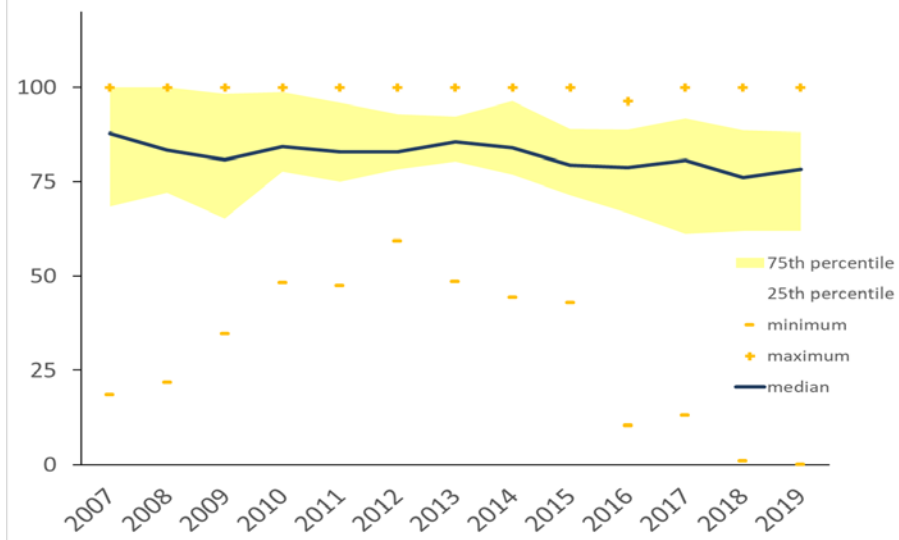
- Enforcement is one of the pillars identified by the CSS
- Five are the main clusters for enforcement:
 - *Being more effective at the borders and on e-commerce*
 - *Reinforce the support to Member States and strengthen the role of the ECHA Forum*
 - *Prioritise areas for enforcement*
 - *Strengthen the use of IT enforcement platforms and other digital tools*
 - *Allow civil society and business to contribute to enforcement*

EU level enforcement indicators

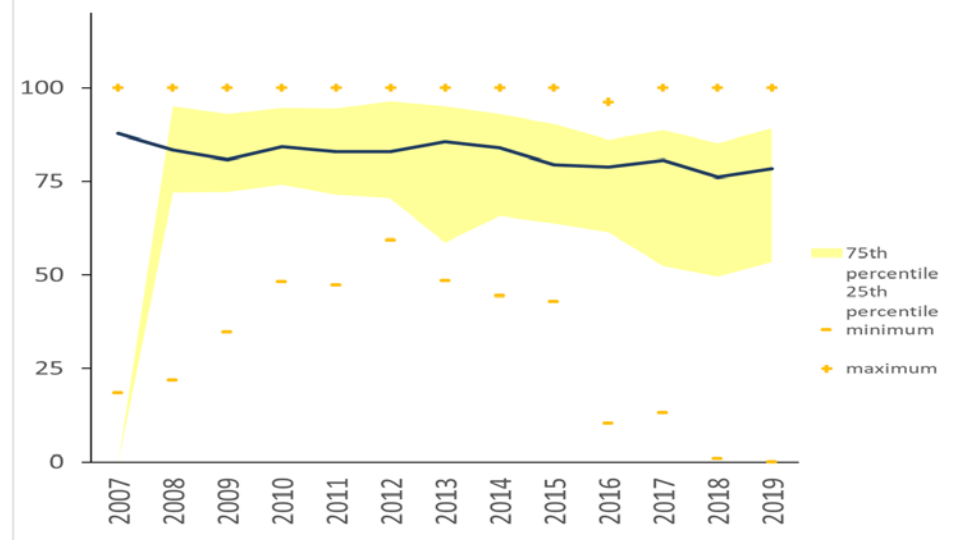
Category	Label	Name of the indicator	Applicable to	
			REACH	CLP
Compliance	EU1	Level of compliance in the EU	#	
	EU2	Level of compliance in the EU		#
	EU3	Level of compliance in imported goods in the EU	#	#
	EU4	Level of compliance established by ECHA	#	#
Enforcement actions	EU5	% of appeals and enforcement decisions overturned	#	
	EU6	% of appeals and enforcement decisions overturned		#
	EU7	Penalties vs. compliance costs	#	(#)
Training	EU8	Inspectors trained	#	#
Forum	EU9	Forum output	#	#
	EU10	Appreciation of the Forum	#	#
Harmonised enforcement	EU11	RAPEX alerts related to REACH and CLP	#	#
	EU12	Enforcement complaints addressed to the COM	#	#
Overall enforcement	EU+	The overall state of enforcement	#	#

REACH and CLP compliance

EU1: REACH compliance (%)



EU2: CLP compliance (%)

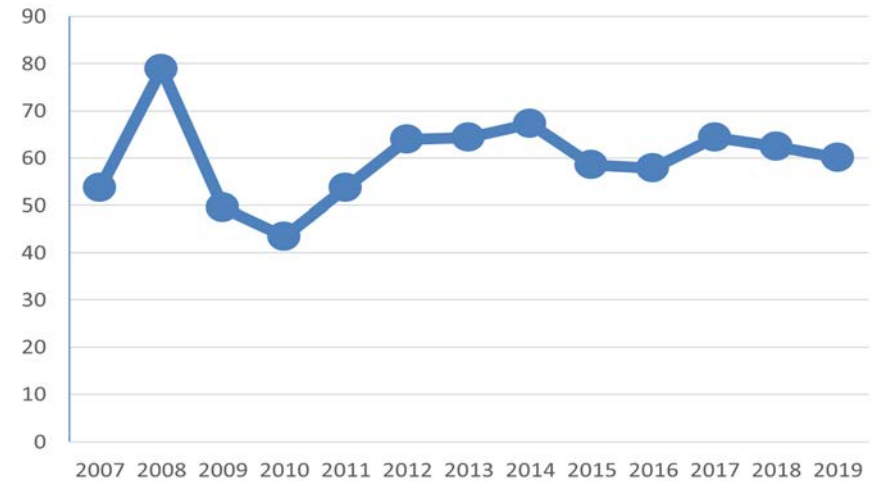


Imports and ECHA compliance

EU3: Compliance in imported goods

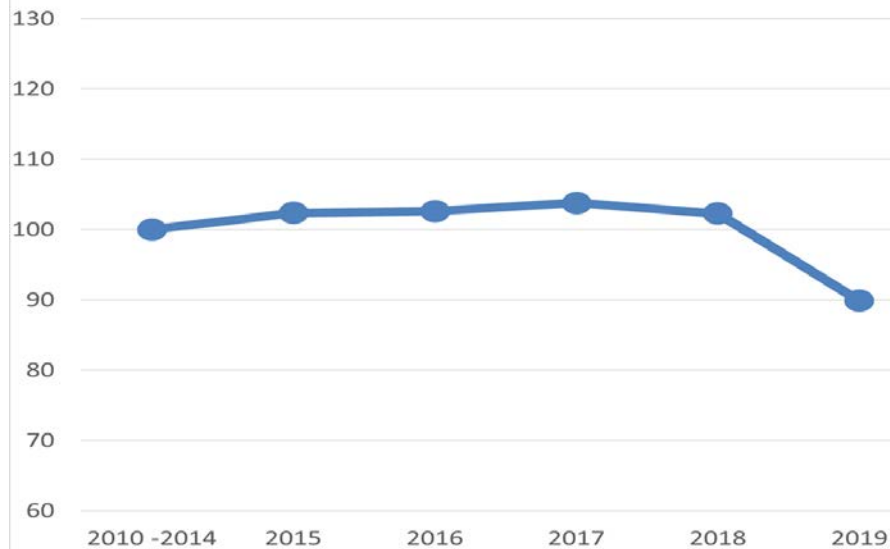


EU4: Compliance found by ECHA

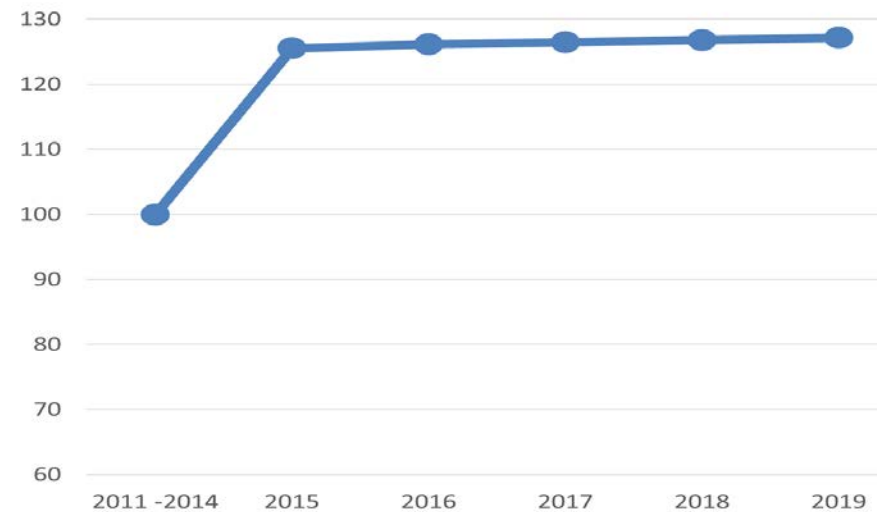


Appealed and overturned decisions

EU5: Appealed & overturned decisions (REACH)

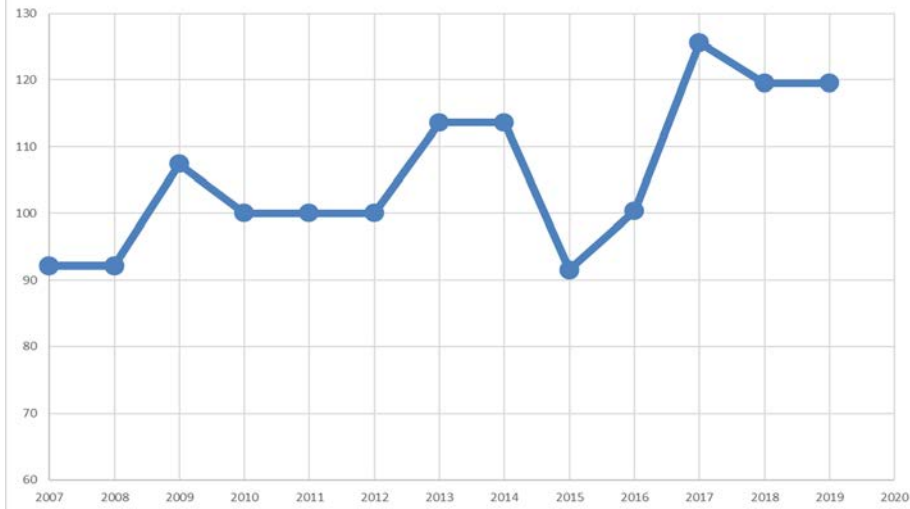


EU6: Appealed & overturned decisions change (CLP)

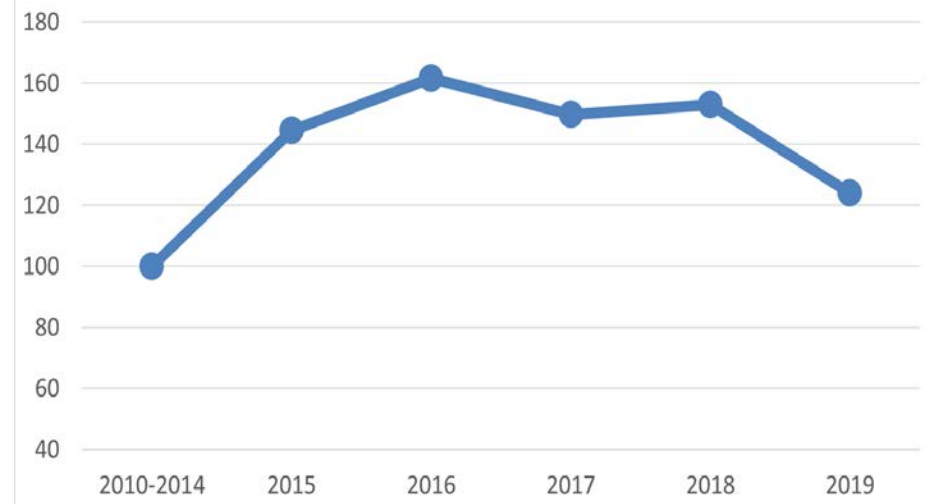


Penalties/compliance and training

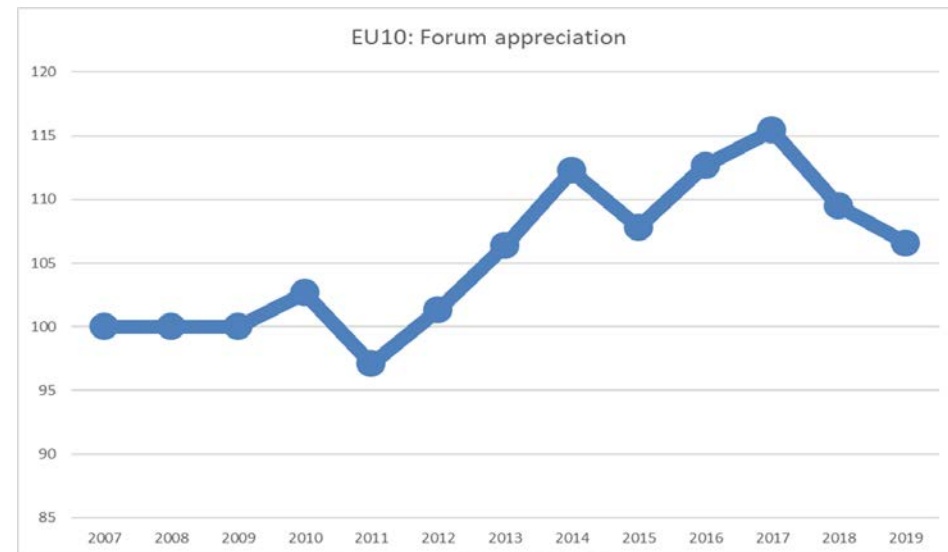
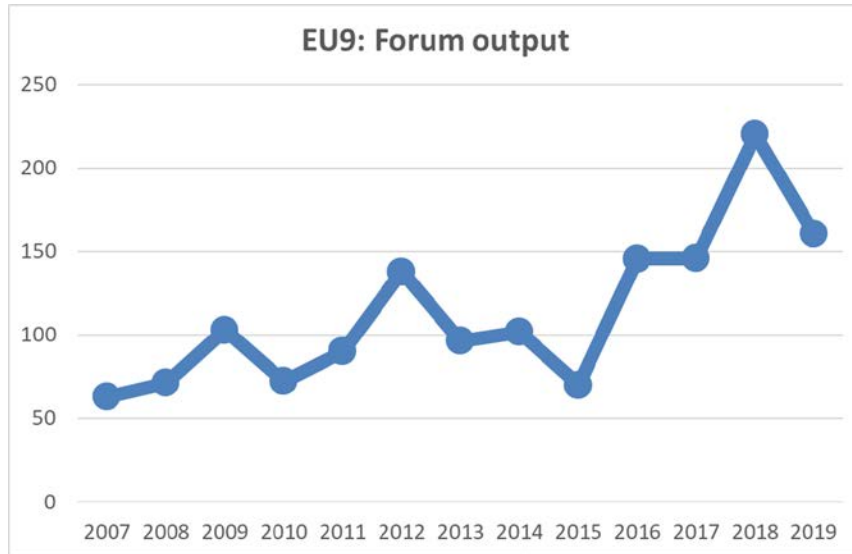
Penalties vs. compliance costs (EU7)



Professionals trained in REACH and CLP (EU8)

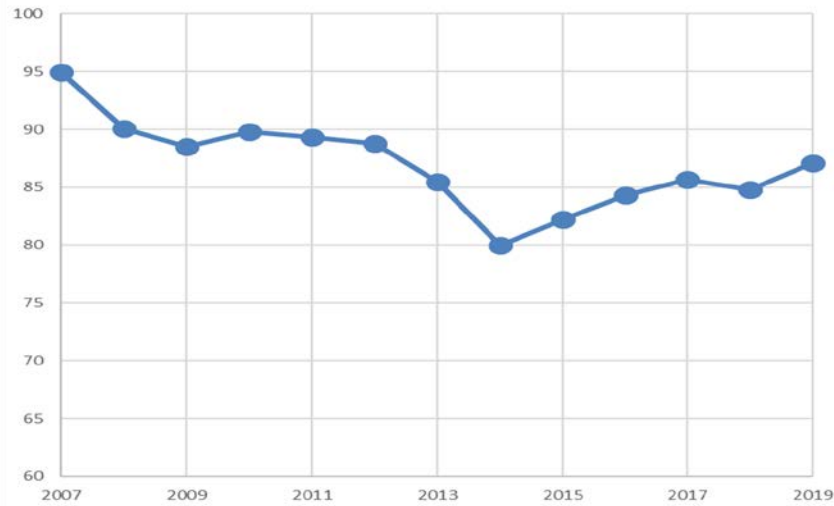


Forum

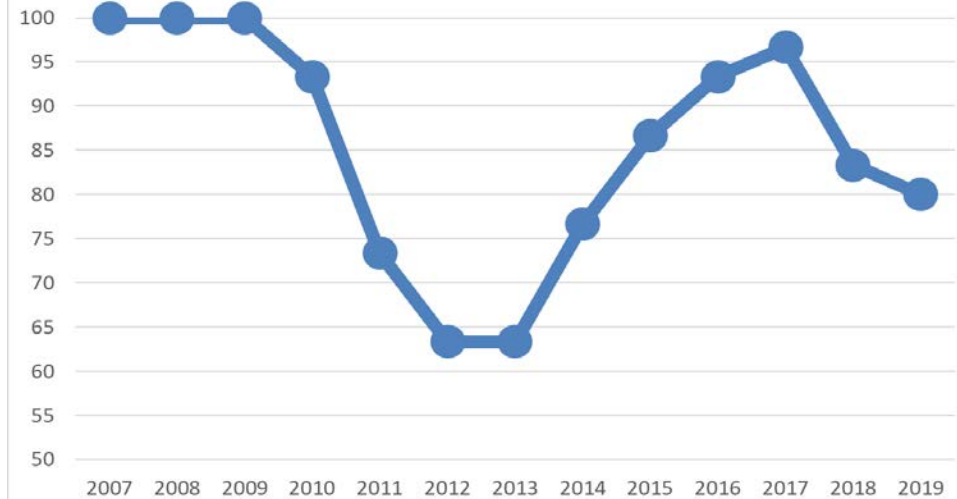


RAPEX and complaints

EU 11: RAPEX INDICATOR

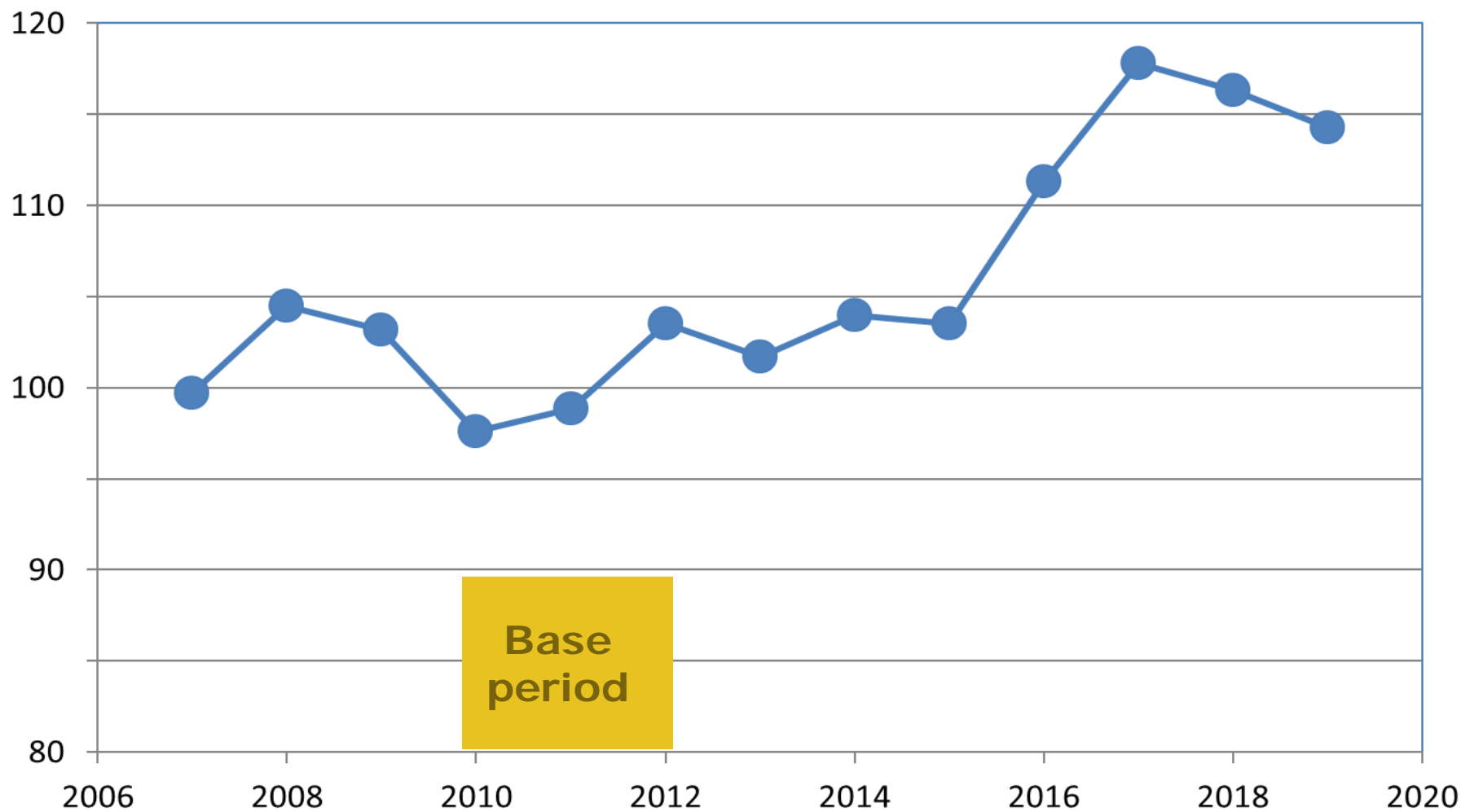


Indicator of complaints on enforcement (EU12)





EU+. Overall state of enforcement





Conclusions

- A huge amount of work ahead of us. Now with studies to be used for REACH and CLP (and others) impact assessment
- Enforcement in the CSS: imports, support MS, risk of non-compliance analysis, IT and involvement of civil society



Conclusions

- Enforcement indicators help us to have a better knowledge of REACH and CLP enforcement and to create more intelligence to focus enforcement strategy(ies).
- Results show that indicators provide robust results (e.g. not strongly influenced by missing data). Interpretation of the results still needed
- Results to be used in the REACH/CLP revision